

**1. Handling**

• **Unit Volume / Weight**

Unit Ref : **LG7XL**  
 Volume : **2,022m³**

Weight : **4766kg**

- Weight is based on 2,357kg/m³
- Lifting system is by means of a 2 x 240mm long spherical pin anchors or fork lift slots as shown.

Pin anchor is rated at 7.5 tonnes with a safety factor of 3.

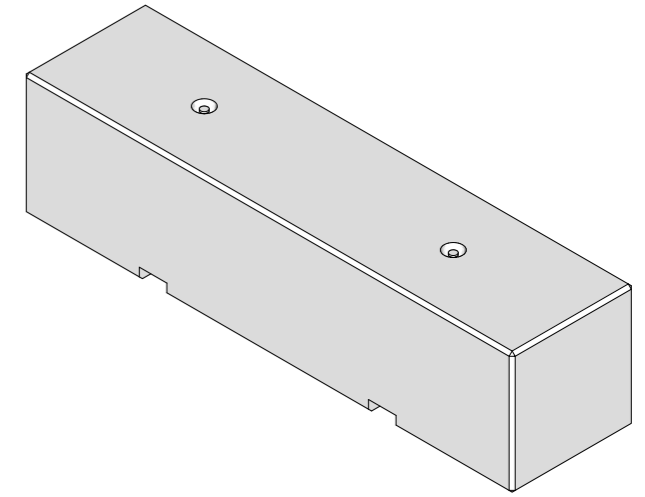
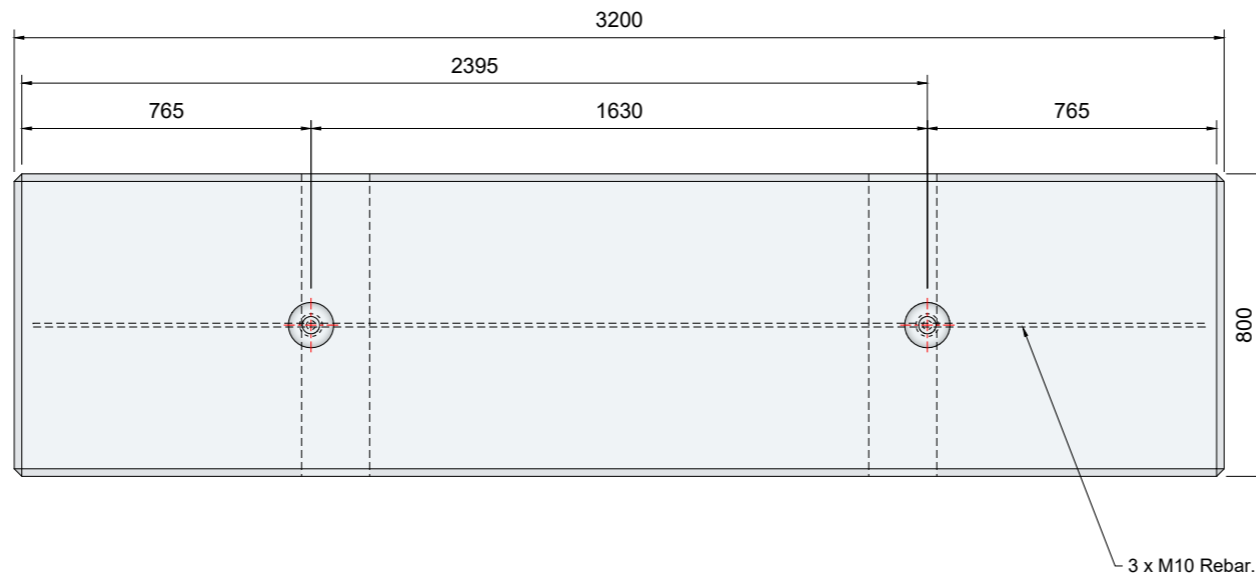
- All lifting should comply with the Lifting Operation & Lifting Equipment Regulations 1998 (LOLER).

• **Lifting Pin Characteristics**

Anchor Type : **T-075-0240**  
 Anchor Length : **240mm**  
 Anchor Cover : **15mm**  
 dia : **24mm**  
 Foot dia : **60mm**  
 Load Class : **7.5 tonnes**

**IMPORTANT NOTE :**

Prior to lifting older / pre-used blocks, check the lifting pin for wear / corrosion and check the blocks for cracks. IF the block is cracked or the pin is worn, it could fail when lifting.



**2. Concrete**

- Characteristic 28 day cube strength = 50 N/mm² min.  
 Concrete is Class A1 Fire Resistant in accordance with clause 4.3.4.4 of EN 13369

**3. Manufacture**

- Manufactured to : **BS EN 13369 : 2013**
- Tolerances to : **BS EN 13670 : 2009**

**4. Physical & Chemical Properties**

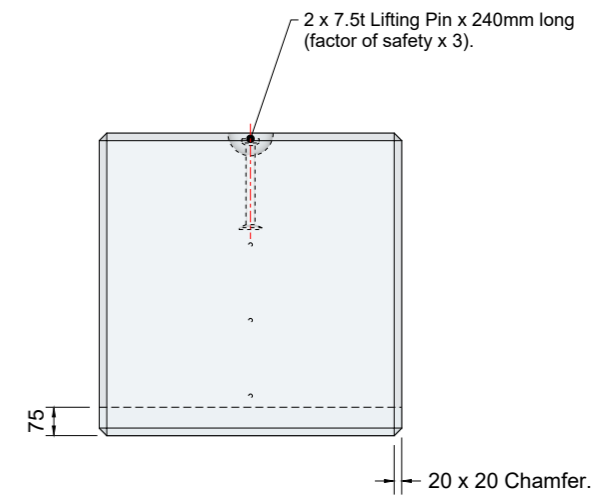
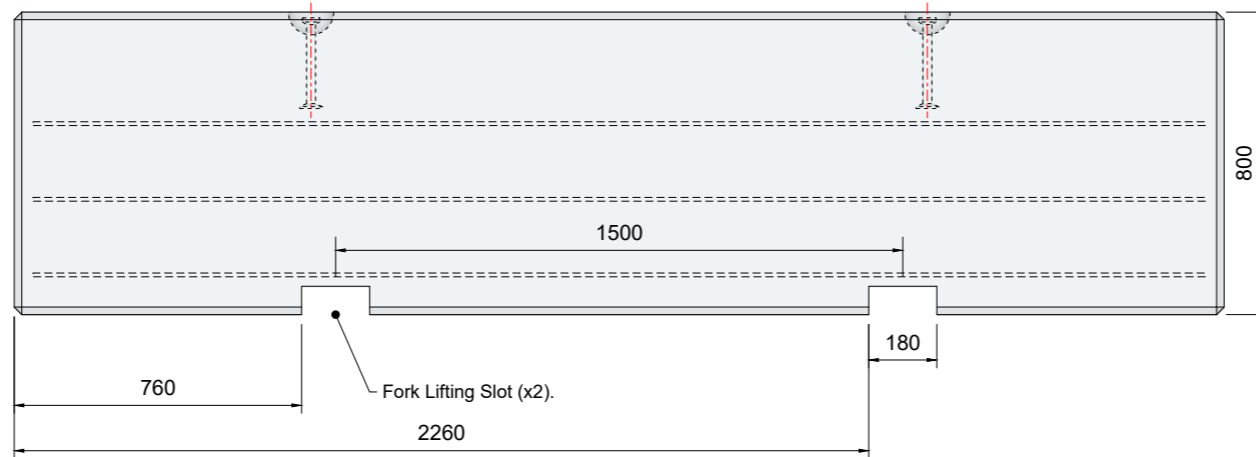
Appearance : Grey in Colour  
 Other Chemical Properties : Not Applicable

**5. Design**

- Design Life : **>100 years**

**6. Manufacture Tolerances**

Length **±5mm**  
 Width **±5mm**  
 Height **±5mm**



										TITLE		3m 5 Tonne Concrete Block			Maltaward (Barriers) Ltd.										
												3200mm x 800mm x 800mm													
REV	DATE	REASON FOR ISSUE	DRN	APP	REV	DATE	REASON FOR ISSUE	DRN	APP			DRN	CTC	CHKD	OB	DATE	29-10-24	SIZE	A3	SCALE	1:20	DRG	7XL	EV	C